

# PRODUCT CATALOG 2020



**SDT**  
TECHNOLOGY

<b>I.S.T.* Power CUTTER* Max 8</b>	<b>Chapter 5</b>
<b>I.S.T.* Power CUTTER* Mini 6</b>	<b>Chapter 6</b>



## Premium Diamond Tooling for High-Performance Material Removal and Long Service Life

Materials to be processed:

- Concrete
- Reinforced concrete
- Deposits/fouling
- Cast iron
- Vitrified clay

Page 1 + 2



## Innovative PCD Cutting Tooling For Fast and Precise Opening of CIPP Liners

Materials to be processed:

- CIPP liners
- PVC

Page 3 + 4



## High-Tech PCD Tooling with Unbeatable Cutting Performance and Material Removal Rate

Materials to be processed:

- Concrete
- Vitrified clay
- Deposits/fouling
- CIPP liners
- PVC
- Roots

Page 5 + 6



## Carbide-Granulate Faced Tooling For Eye-Pleasing Finishes

Materials to be processed:

- CIPP liners
- PVC
- Roots

Page 7



## Functional Accessories

High-quality brushes, adapters, extensions, etc.

Page 8



## Mushroom-head milling cutter

**Field of application:** Surface grinding and milling

Article No.	Pipe DN mm	Ø Tool mm	Height mm	Segments
20006 P	200-300	80	30	21
20007 P	300-450	80	30	21
20008 P	450-600	80	30	21
20024 P	200-300	70	30	18
20025 P	300-450	70	30	18
20026 P	450-600	70	30	18



## Mushroom-head milling cutter

**Field of application:** Surface grinding and milling

Article No.	Pipe DN mm	Ø Tool mm	Height mm	Segments
SW 00005	300-600	97	30	12
SW 00006	200-600	70	30	12

Optimized for I.S.T. Power CUTTER 200



## Tapered milling cutter

**Field of application:** Preparatory milling of laterals, Removal of intruding laterals

Article No.	Pipe DN mm	Ø Tool mm	Height mm	Segments
20004 P	300-600	52/42	40	9
20001 P	200-300	52/46	25	9



## Tapered milling cutter

**Field of application:** Preparatory milling of laterals, Removal of intruding laterals

Article No.	Pipe DN mm	Ø Tool mm	Height mm	Segments
20013 P	300-600	38/28	53	6
20027 P	200-300	36/28	32	6





## Inlet milling cutter

**Field of application:** Preparatory milling of laterals, Removal of intruding laterals

Article No.	Pipe DN mm	Ø Tool mm	Height mm	Segments
20015 P	250-600	68	33	16



## Finger milling cutter

**Field of application:** Preparatory milling of cracks and sockets

Article No.	Pipe DN mm	Ø Tool mm	Height mm	Segments
20003 P	250-600	30	55	5



## Ball milling cutter

**Field of application:** Removal of intruding laterals and obstacles

Article No.	Pipe DN mm	Ø Tool mm	Height mm	Segments
20020 P	250-600	50	46	19
20021 P	250-600	40	37	13



## INNOVATIVE TOOLING FOR OPENING OF CIPP LINERS.

- Virtually vibration-free milling, without bounce-out or lateral displacement
- Precise, effective material removal
- Highly efficient drive power transmission
- Reduces stress and wear on drive shaft and bearings

### **linerCUT Pro® Tapered milling cutter with tungsten carbide tip**

**Field of application:** Opening of laterals and inlet lines

**Note:** Only suitable for processing CIPP liners and PVC!

Article No.	Pipe DN mm	Ø Tool mm	Height mm	Segments
BL 11437	250-600	28/18	45	14



### **linerCUT Pro® Tapered milling cutter with tungsten carbide tip**

**Field of application:** Opening of laterals and inlet lines

**Note:** Only suitable for processing CIPP liners and PVC!

Article No.	Pipe DN mm	Ø Tool mm	Height mm	Segments
BL 11438	200-450	30/18	35	10

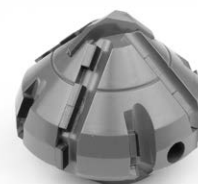


### **linerCUT Pro® Taper/cylinder milling cutter with tungsten carbide tip**

**Field of application:** Opening of laterals and inlet lines

**Note:** Only suitable for processing CIPP liners and PVC!

Article No.	Pipe DN mm	Ø Tool mm	Height mm	Segments
BL 11439	250-600	45/20	40	22
BL 11441	250-600	55/20	46	24



## INNOVATIVE TOOLING FOR OPENING OF CIPP LINERS.

- Virtually vibration-free milling, without bounce-out or lateral displacement
- Precise, effective material removal
- Highly efficient drive power transmission
- Reduces stress and wear on drive shaft and bearings

### *linerCUT Pro*® Ball milling cutter

**Field of application:** Opening of laterals and inlet lines

**Note:** Only suitable for processing CIPP liners and PVC!

Article No.	Pipe DN mm	Ø Tool mm	Height mm	Segments
BL 11444	250-600	50	60	24



### *linerCUT Pro*® Ball milling cutter

**Field of application:** Opening of laterals and inlet lines

**Note:** Only suitable for processing CIPP liners and PVC!

Article No.	Pipe DN mm	Ø Tool mm	Height mm	Segments
BL 11445	250-600	60	70	30



**OPTIMIZED FOR I.S.T.\* POWER CUTTER\* 200!**

## **BLACK•LINE** Mushroom-head milling cutter

**Field of application:** Surface milling, Removal of intruding obstacles,  
Milling of offset socket transitions

**Note:** Use on steel-reinforced concrete will destroy the cutting elements!

Article No.	Pipe DN mm	Ø Tool mm	Height mm	Segments
BL 11401	250-600	75	27	32
BL 11426	250-600	63	25	28



## **BLACK•LINE** Mushroom-head milling cutter, center cutting

**Field of application:** Frontal and surface milling, Removal of intruding obstacles,  
Milling of offset socket transitions

**Note:** Use on steel-reinforced concrete will destroy the cutting elements!

Article No.	Pipe DN mm	Ø Tool mm	Height mm	Segments
BL 11402	250-600	75	33	34
BL 11427	250-600	65	27	30



## **BLACK•LINE** Inlet milling cutter

**Field of application:** Opening and preparatory milling of laterals and inlet lines,  
Removal of intruding laterals and obstacles

**Note:** Use on steel-reinforced concrete will destroy the cutting elements!

Article No.	Pipe DN mm	Ø Tool mm	Height mm	Segments
BL 11409	250-600	55	30	28





## ProView®

### “See-Through” Milling Tooling

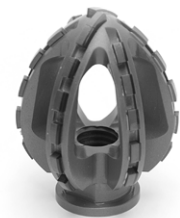
- The “propeller effect” created by the void spaces within the tooling makes it invisible, providing the operator an unobstructed view of the material worked on.
- The void spaces create a lightweight tooling design, reducing stress and wear on the robot’s drive components.

#### **BLACK•LINE** Double-cone milling cutter type *ProView®*

**Field of application:** Opening of laterals and inlet lines

**Note:** Only suitable for processing CIPP liners and PVC!

Article No.	Pipe DN mm	Ø Tool mm	Height mm	Segments
BL 11113	300-600	45	60	34



#### **BLACK•LINE** Ball milling cutter

**Field of application:** Opening of laterals and inlet lines,  
Removal of intruding obstacles

**Note:** Use on steel-reinforced concrete will destroy the cutting elements!

Article No.	Pipe DN mm	Ø Tool mm	Height mm	Segments
BL 11410	250-600	50	45	30



#### **BLACK•LINE** Ball milling cutter

**Field of application:** Opening of laterals and inlet lines

**Note:** Only suitable for processing CIPP liners and PVC!

Article No.	Pipe DN mm	Ø Tool mm	Height mm	Segments
BL 11414	250-600	40	42	18



## HM•LINE Ball milling cutter

**Field of application:** Opening of laterals and inlet lines,  
Removal of intruding obstacles, CIPP liner finishing

Article No.	Pipe DN mm	Ø Tool mm	Height mm	Grit size mm
50001	250-600	50	50	2,0-3,0
50002	250-600	40	42	2,0-3,0



## HM•LINE Mushroom-head milling cutter

**Field of application:** Removal of intruding obstacles, CIPP liner finishing

Article No.	Pipe DN mm	Ø Tool mm	Height mm	Grit size mm
50003	250-600	67	30	2,0-3,0



## Extensions

Stainless steel

Article No.	Ø mm	Height mm
90120	30	30
90121	30	40
90122	30	50



## Adapter

Stainless steel

Article No.	Description
SP 90110	Locking disc
90112	Adapter for mounting of wheel brushes and cutting discs



## Brushes

Article No.	Description	Ø mm	Fitting mm
80018	Wheel brush	100	22,2
80020	Cup brush	65	M14





### Premium Diamond Tooling for High-Performance Material Removal and Long Service Life

Materials to be processed:

- Concrete
- Reinforced concrete
- Deposits/fouling
- Cast iron
- Vitrified clay

Page 1



### Field-Proven Standard Diamond Tooling with Outstanding Value for Purchase Investment

Materials to be processed:

- Concrete
- Reinforced concrete
- Deposits/fouling
- Cast iron
- Vitrified clay

Page 2 + 3



### Innovative PCD Cutting Tooling For Fast and Precise Opening of CIPP Liners

Materials to be processed:

- CIPP liners
- PVC

Page 4



### High-Tech PCD Tooling with Unbeatable Cutting Performance and Material Removal Rate

Materials to be processed:

- Concrete
- Vitrified clay
- Deposits/fouling
- CIPP liners
- PVC
- Roots

Page 5 + 6



### Carbide-Granulate Faced Tooling For Eye-Pleasing Finishes

Materials to be processed:

- CIPP liners
- PVC
- Roots

Page 7



### Functional Accessories

High-quality brushes, adapters, extensions, etc.

Page 8



## Mushroom-head milling cutter

**Field of application:** Surface grinding and milling

Article No.	Pipe DN mm	Ø Tool mm	Height mm	Segments
20024 P	200-300	70	30	18
20025 P	300-450	70	30	18
20026 P	450-600	70	30	18



## Mushroom-head milling cutter

**Field of application:** Surface grinding and milling

Article No.	Pipe DN mm	Ø Tool mm	Height mm	Segments
SW 00006	200-600	70	30	12



Optimized for I.S.T. Power CUTTER 150



## Tapered milling cutter

**Field of application:** Preparatory milling of laterals, Removal of intruding laterals

Article No.	Pipe DN mm	Ø Tool mm	Height mm	Segments
20013 P	300-600	38/28	53	6
20027 P	200-300	36/28	32	6



## Tapered milling cutter

**Field of application:** Preparatory milling of laterals, Removal of intruding laterals

Article No.	Pipe DN mm	Ø Tool mm	Height mm	Segments
20017 P	250-600	32/23	53	4



### **N•TEC II®** Mushroom-head milling cutter

**Field of application:** Surface grinding and milling

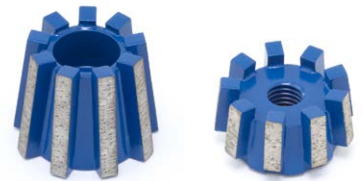
Article No.	Pipe DN mm	Ø Tool mm	Height mm	Segments
20006	200-300	70	30	10
20007	300-450	70	30	10
20008	450-600	70	30	10
20031	200-300	70	30	15
20032	300-450	70	30	15
20033	450-600	70	30	15



### **N•TEC II®** Tapered milling cutter

**Field of application:** Preparatory milling of laterals, Removal of intruding laterals

Article No.	Pipe DN mm	Ø Tool mm	Height mm	Segments
20004	300-600	50/40	40	9
20001	200-300	50/45	25	9



### **N•TEC II®** Inlet milling cutter

**Field of application:** Preparatory milling of laterals, Removal of intruding laterals

Article No.	Pipe DN mm	Ø Tool mm	Height mm	Segments
20015	250-600	68	33	16



### **N•TEC II®** Finger milling cutter

**Field of application:** Preparatory milling of cracks and sockets

Article No.	Pipe DN mm	Ø Tool mm	Height mm	Segments
21003	250-600	30	55	5



### **N•TEC II®** Slot milling cutter

**Field of application:** Preparatory milling of cracks and sockets

Article No.	Pipe DN mm	Ø Tool mm	Height mm	Segments
20009	250-600	18	50	1



### **N•TEC II®** Ball milling cutter

**Field of application:** Removal of intruding laterals and obstacles

Article No.	Pipe DN mm	Ø Tool mm	Height mm	Segments
20020	250-600	50	46	19
20021	250-600	40	37	13



### INNOVATIVE TOOLING FOR OPENING OF CIPP LINERS.

- Virtually vibration-free milling, without bounce-out or lateral displacement
- Precise, effective material removal
- Highly efficient drive power transmission
- Reduces stress and wear on drive shaft and bearings

#### **linerCUT Pro® Tapered milling cutter with tungsten carbide tip**

**Field of application:** Opening of laterals and inlet lines

**Note:** Only suitable for processing CIPP liners and PVC!

Article No.	Pipe DN mm	Ø Tool mm	Height mm	Segments
BL 11437	250-600	28/18	45	14



#### **linerCUT Pro® Tapered milling cutter with tungsten carbide tip**

**Field of application:** Opening of laterals and inlet lines

**Note:** Only suitable for processing CIPP liners and PVC!

Article No.	Pipe DN mm	Ø Tool mm	Height mm	Segments
BL 11438	200-450	30/18	35	10

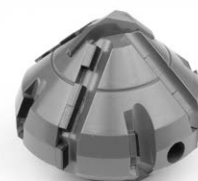


#### **linerCUT Pro® Taper/cylinder milling cutter with tungsten carbide tip**

**Field of application:** Opening of laterals and inlet lines

**Note:** Only suitable for processing CIPP liners and PVC!

Article No.	Pipe DN mm	Ø Tool mm	Height mm	Segments
BL 11439	250-600	45	40	22
BL 11441	250-600	55/20	46	24

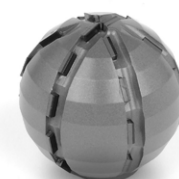


#### **linerCUT Pro® Ball milling cutter**

**Field of application:** Opening of laterals and inlet lines

**Note:** Only suitable for processing CIPP liners and PVC!

Article No.	Pipe DN mm	Ø Tool mm	Height mm	Segments
BL 11444	250-600	50	60	24





### **BLACK-LINE** Mushroom-head milling cutter

**Field of application:** Surface milling, Removal of intruding obstacles,  
Milling of offset socket transitions

**Note:** Use on steel-reinforced concrete will destroy the cutting elements!

Article No.	Pipe DN mm	Ø Tool mm	Height mm	Segments
BL 11401	250-600	75	27	32
BL 11426	250-600	63	25	28



### **BLACK-LINE** Mushroom-head milling cutter, center cutting

**Field of application:** Frontal and surface milling, Removal of intruding obstacles,  
Milling of offset socket transitions

**Note:** Use on steel-reinforced concrete will destroy the cutting elements!

Article No.	Pipe DN mm	Ø Tool mm	Height mm	Segments
BL 11402	250-600	75	33	34
BL 11427	250-600	65	27	30



### **BLACK-LINE** Inlet milling cutter

**Field of application:** Opening and preparatory milling of laterals and inlet lines,  
Removal of intruding laterals and obstacles

**Note:** Use on steel-reinforced concrete will destroy the cutting elements!

Article No.	Pipe DN mm	Ø Tool mm	Height mm	Segments
BL 11409	250-600	55	30	28



## ProView®

### “See-Through” Milling Tooling

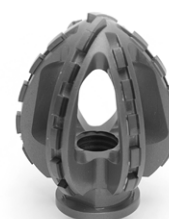
- The “propeller effect” created by the void spaces within the tooling makes it invisible, providing the operator an unobstructed view of the material worked on.
- The void spaces create a lightweight tooling design, reducing stress and wear on the robot’s drive components.

#### **BLACK•LINE** Double-cone milling cutter type *ProView®*

**Field of application:** Opening of laterals and inlet lines

**Note:** Only suitable for processing CIPP liners and PVC!

Article No.	Pipe DN mm	Ø Tool mm	Height mm	Segments
BL 11113	300-600	45	60	34



#### **BLACK•LINE** Ball milling cutter

**Field of application:** Opening of laterals and inlet lines,

Removal of intruding obstacles

**Note:** Use on steel-reinforced concrete will destroy the cutting elements!

Article No.	Pipe DN mm	Ø Tool mm	Height mm	Segments
BL 11410	250-600	50	45	30



#### **BLACK•LINE** Ball milling cutter

**Field of application:** Opening of laterals and inlet lines

**Note:** Only suitable for processing CIPP liners and PVC!

Article No.	Pipe DN mm	Ø Tool mm	Height mm	Segments
BL 11414	250-600	40	42	18



### HM•LINE Ball milling cutter

**Field of application:** Opening of laterals and inlet lines,  
Removal of intruding obstacles, CIPP liner finishing

Article No.	Pipe DN mm	Ø Tool mm	Height mm	Grit size mm
50001	250-600	50	50	2,0-3,0
50002	250-600	40	42	2,0-3,0



### HM•LINE Mushroom-head milling cutter

**Field of application:** Removal of intruding obstacles, CIPP liner finishing

Article No.	Pipe DN mm	Ø Tool mm	Height mm	Grit size mm
50003	250-600	67	30	2,0-3,0



## Extensions

Stainless steel

Article No.	Ø mm	Height mm
90120	30	30
90121	30	40
90122	30	50



## Adapter

Stainless steel

Article No.	Description
SP 90110	Locking disc
90112	Adapter for mounting of wheel brushes and cutting discs



## Brushes

Article No.	Description	Ø mm	Fitting mm
80018	Wheel brush	100	22,2
80020	Cup brush	65	M14

